



Professional Resources

Restoring cervically eroded and fractured teeth using Beautifil™ restorative material

By Jeffrey C. Hoos, DMD, FAGD
and Therese Mainella CDA, RDA, Marketing Manager, Shofu Dental Corp.

As appeared in *Dental Products Report*

Giomer restoratives with PRG technology fill several significant and specific needs for directly restoring teeth. Their advantages -- fluoride release and recharge, ease of use, natural light-diffusing esthetics, and high strength -- make them a practical and versatile choice for most types of direct restorative applications.

Following are step-by-step procedures for two restorative cases involving cervically eroded teeth and fractured teeth using Beautifil giomer restorative material.

Case 1 -- Cervical erosion

A 37-year-old male presents with cervical erosion and sensitivity on teeth 28 and 29 (**Figure 1**). Because of the acute sensitivity and soft consistency of the teeth, Beautifil restorative material was selected because of its fluoride-releasing properties and high bonding strength to dentin.



FIGURE 1. Cervical erosion on teeth #28 and #29.

1. Prepare the teeth conservatively.
2. Apply a mixture of FL-Bond Primers A and B. Note: The surface appears shiny when sufficient primer is applied (**Figure 2**).
3. Apply FL-Bond adhesive (**Figure 3**) and light cure for 10 seconds using a conventional halogen light.
4. Select two shades-A4 and C2-because of the shade differences in the natural teeth. Apply using a cervical matrix (**Figs. 4 and 5**).
5. Use a T&F hybrid point for gross reduction (**Figure 6**). Note: Do not "ditch" the restoration or touch tooth structure.
6. Final finish and polish with OneGloss One-Step composite finishers and polishers (**Figure 7**). **Figure 8** shows the completed restorations.

Home

Teeth For A Lifetime

Balancing

Articles

Seminars

Brush & Floss Dental Center

Contact Us

© 1999 - 2005
Dental Explorations LLC

J.MORITA
USA
www.jmoritusa.com

BASIC
Dental Implants LLC

Visit
Dr. Hoos'
Practice
Web Site
Brush & Floss
Dental Center



Figure 2.
The surface appears shiny when sufficient primer is applied.



Figure 3.
Apply FL-Bond adhesive.



Figure 4.
Apply Beautiful shades A4 and C2.



Figure 5.
Apply shades using a cervical matrix.



Figure 6.
Use a T&F hybrid point for gross reduction.



Figure 7.
Polish and finish using OneCross One-Step composite finisher and polisher.



Figure 8.
Magnified image of impression showing incomplete capture of the tissue margins.

Case 2 -- Mesial/incisal fracture

A 12-year-old patient presents with a mesial/incisal fracture of tooth #8 (**Figure 9**).



Figure 9.
A fractured mesial incisal of tooth #8.

1. Create a slight bevel to enhance surface area using Robot diamond points (**Figure 10**).
 2. Apply a mixture of FL-Bond primers A&B.
 3. Place FL-Bond adhesive (**Figure 11**) and light cure using a conventional halogen light.
 4. Select Beautifil shade A1; sculpt (**Figure 12**) and light cure.
 5. Use OneGloss One-Step finisher/polisher to adjust, finish, and polish (**Figure 13**) the restoration.
 6. Use a Robot carbide bur to smooth interproximal embrasure space (**Figure 14**).
- Figure 15** shows the completed restoration.

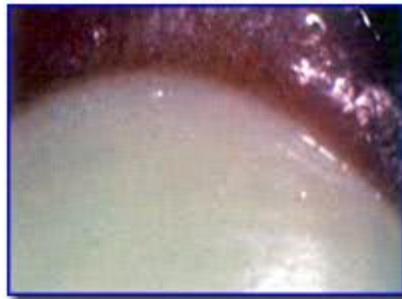


Figure 10. Create a slight bevel.



Figure 11. Place FL-Bond adhesive.



Figure 12. Sculpt Beautifil shade A1.



Figure 13. Finish and polish using OneGloss One-Step finisher/polisher.



Figure 14. Use a Robot carbide bur to smooth interproximal embrasure space.



Figure 15. The completed restoration.

[This article is available in PDF Format](#)



[Return to Main Page](#)

Dental Explorations L.L.C.

THE INFORMATION SOURCE FOR ALL DENTAL PROFESSIONALS



Betsy Smirnoff Hoos, Director

**8 Hollow Oak Road
Woodbridge, CT 06525**

**Phone: (203) 389-6263
Fax: (203) 397-3632**

deinfo@dentalexplorations.com



Designed and hosted by

SK web construction